

Step 1:

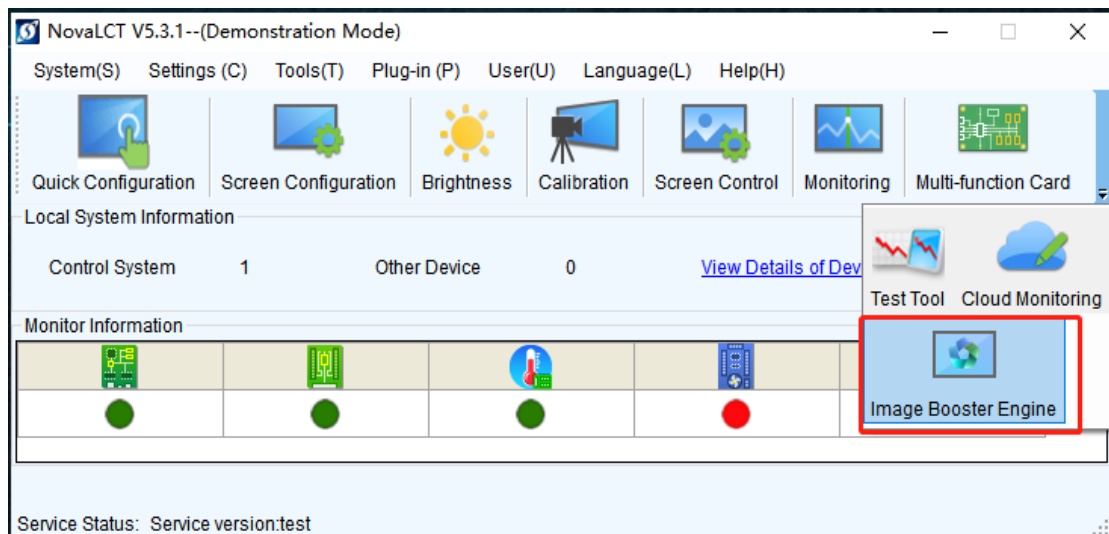
Using **NovaLct 5.3.1** and **A8S 4.6.5.0 Beta1** (These two inside in attached files)

Step 2:

Open NovaLCT 5.3.1 and make sure calibration has been turned on;

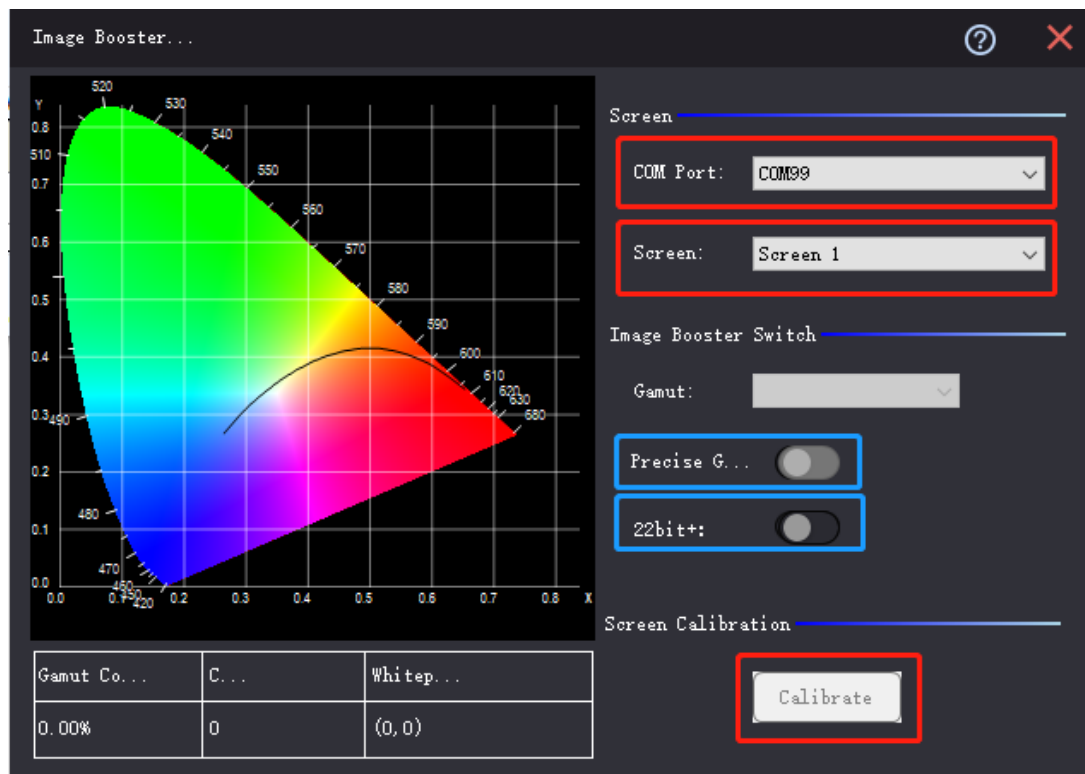
Step 3:

Go to “Image Booster Engine” of main page



Step 4:

Make sure you COM Port is correct and you have configured whole screen, then click “Calibrate” directly.

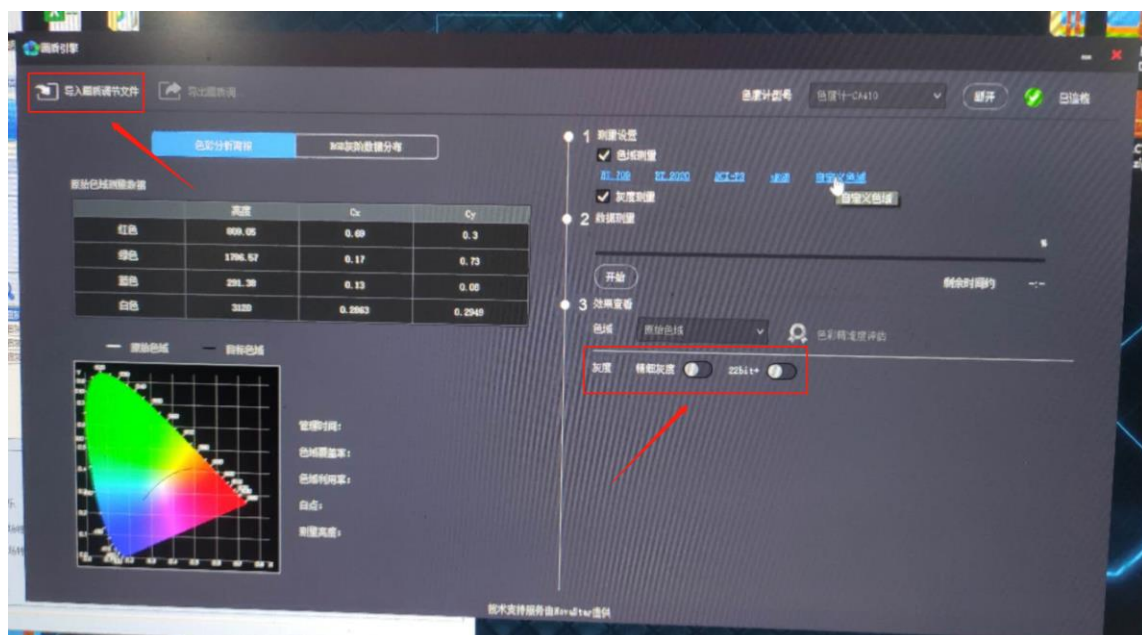


Step 5:

Go this page, sorry for it's Chinese version, cause that now I am in hotel writing this email, didn't connect real led screen;

Focus on left-top key, import corresponding loading file for P1.9 and P2.6;

At last, switch on two keys called "Precise Grayscale" and "22bit+" in right-bottom corner;



Step 6:

Do a test please, check it's effect in different grayscale, especially in low brightness and low grayscale.